

Standard PPL Navigation Route 3

Route 3

(Landaway – Shobdon)

Lyneham – Set heading point (as appropriate)

Set Heading point – Shobdon

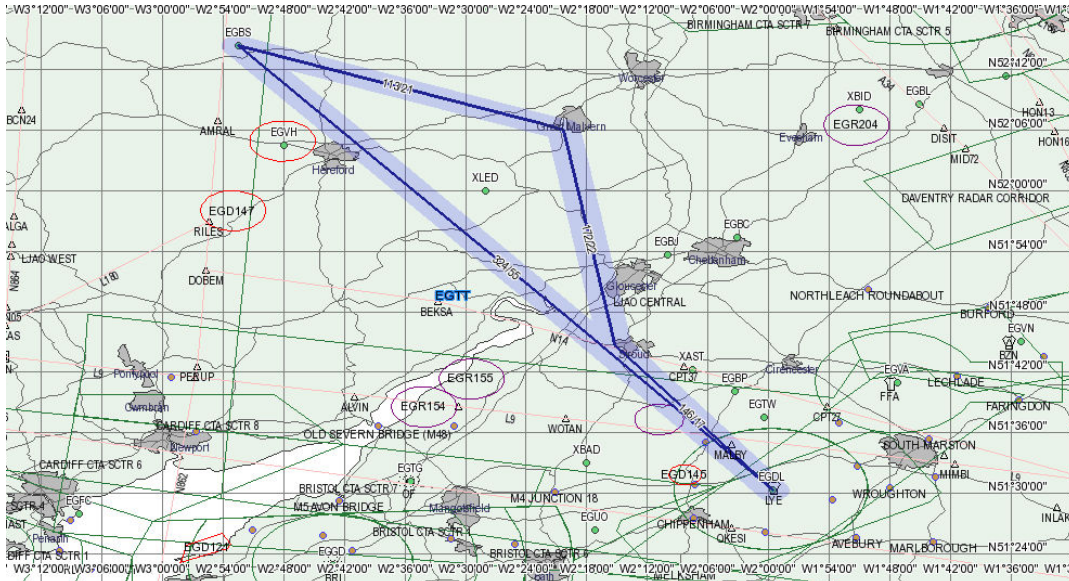
Shobdon – Set heading point (as appropriate)

Set Heading Point – South West Great Malvern

Great Malvern – West Stroud

Stroud – Lyneham

Total Distance 118nm



This is a list of standard navigation routes which may be used at the instructor's discretion. It is NOT required that these routes be used. These routes MAY be modified for any reason. In some cases it is required that additional waypoints be added to avoid airspace (depending on the altitude flown).

It is not necessary for a student to complete any or all of these routes to progress through the PPL course.