

Standard PPL Navigation Route 7

Route 7

(Brize Zone Crossing)

Lyneham – Set heading point

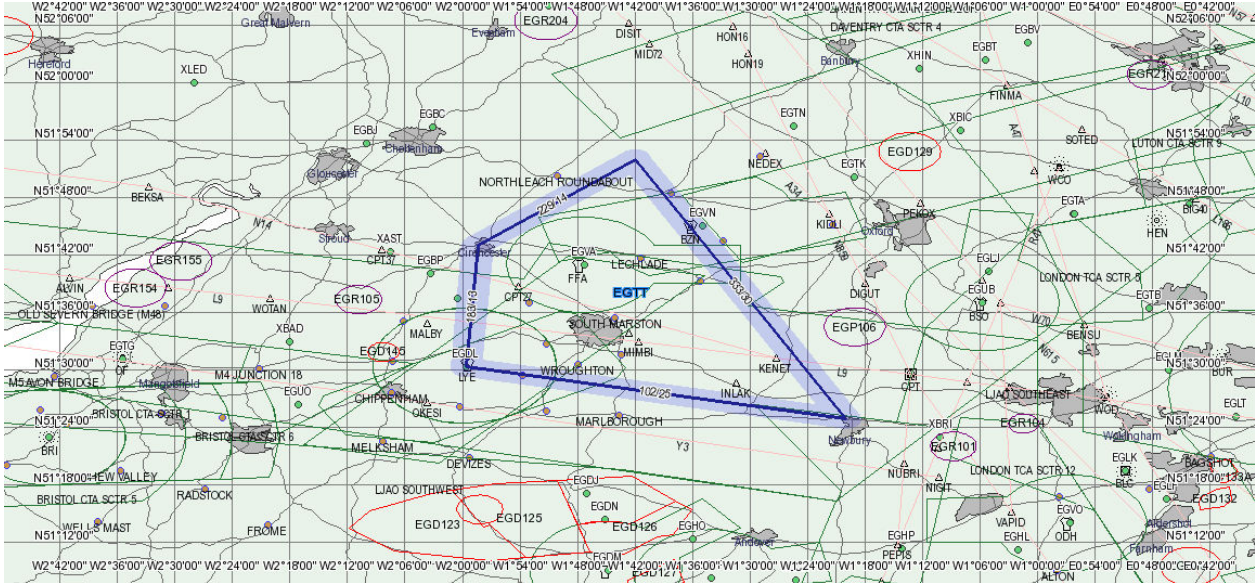
Set heading point – North West Newbury

Newbury – Little Rissington

Little Rissington – North West Cirencester

Cirencester – Lyneham

Total distance 82nm.



This is a list of standard navigation routes which may be used at the instructor's discretion. It is NOT required that these routes be used. These routes MAY be modified for any reason. In some cases it is required that additional waypoints be added to avoid airspace (depending on the altitude flown).

It is not necessary for a student to complete any or all of these routes to progress through the PPL course.